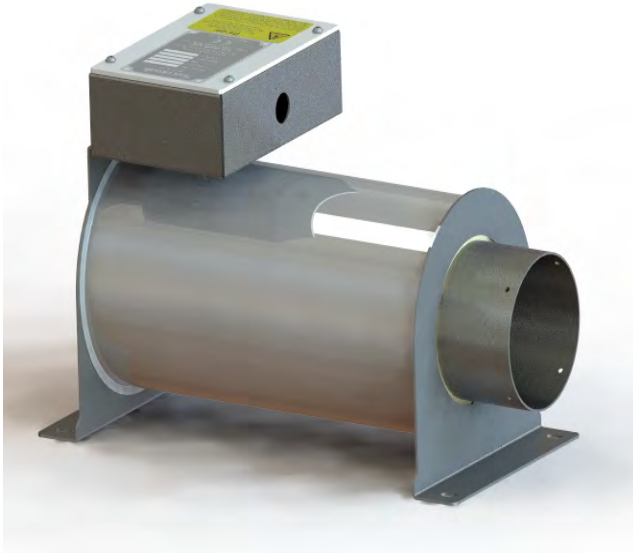


# Process Air Heater HT648VL24-HP Heater

**SECOMAK**  
a i r a t w o r k



Picture depicts  
648V Heater 24kW

*The model 648V Heater is a UL/CSA approved unit. It consists of element assembly mounted inside a stainless steel tube which is enclosed in an insulated jacket. The jacket allows maximum heat transfer of the airstream while maintaining a low surface temperature. This makes the model 648 ideal for mounting in vulnerable areas or in enclosures containing other equipment.*

*The inlet of the model 648V is flanged and the outlet is plain to take a Duct/Hose.*

*The terminal box is manufactured from stainless steel and is protected to IP65. Connection is made to each element using DIN rail termination for ease of wiring.*

*The model 648V Heater will give an outlet temperature up to 300°C and has a 24 kW loading. The inlet of the 648V can be fitted with thermal cut-out to protect the element in the event of the airflow becoming restricted.*

## **Electrical:**

**415V or 380V 3 Phase**

**Other Voltages available with  
limited loading**

**Maximum Outlet Temperature: 300°C**

**Resistance to Airflow (approx.)**

**0.22" w.g. at 200 ft<sup>3</sup>/min**

**3.50" w.g. at 800 ft<sup>3</sup>/min**

**10.80" w.g. at 1400 ft<sup>3</sup>/min**