

SECOMAK
a i r a t w o r k



Capsule and Sleeve Tunnels

'THERMOSHRINK' SLEEVE & CAPSULE SHRINK TUNNELS

Secomak, for many years, specialised in the design and manufacture of high quality fans and hot air resistors for a broad range of industrial processes. From the expertise gained, Secomak has developed range of hot air tunnels specifically for sleeve and capsule shrinking, that are now in extensive use throughout the world. All of the tunnels from Secomak are equally suitable for use on production lines with hand application of sleeves or on lines with automatic machinery.

In addition to our standard tunnels Secomak offer to design and construct tunnels to meet the particular requirements of a customer's special project.

| Model | Application | | | | Throughput bpm | Installed Power kW | Painted Steel | Stainless Steel Clad | Stainless Steel |
|-------|----------------------------------|-------------------|----------------------------|--------------------------------|-------------------|--------------------------|------------------|----------------------------|--------------------|
| | Tamper Evident Band Shrinking | Capsule Shrinking | Full Body Sleeve Shrink | Decorative Sleeve Shrinking | | | | | |
| 450 | | | | | 100 | 3 | STD | O | NA |
| 750 | | | | | 100 | 12 | STD | O | O |
| 1500 | | | | | 200 | 18 | STD | STD | NA |
| 700 | | | | | 150 | 5 | O | O | STD |
| 1000 | | | | | 300 | 9 | O | O | STD |
| 1200 | | | | | 400 | 12 | O | O | STD |

STD = Standard supply
O = Optional construction
NA = Not Available

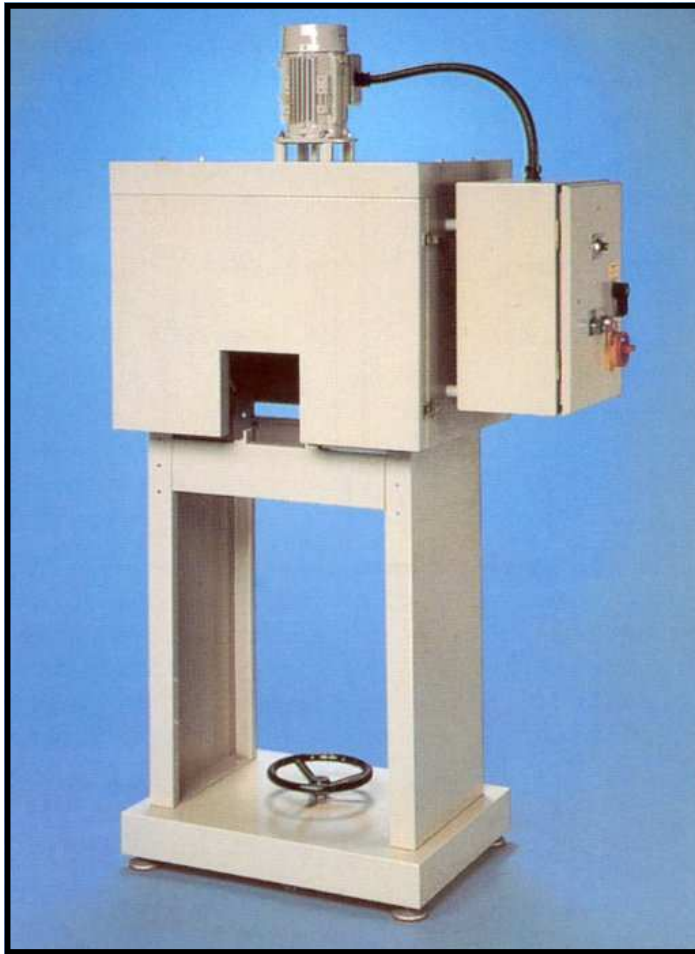
Production capacity is specified in bottles per minute but is dependent on

- Size and material from which the container is constructed.
- Shape of container
- Area to be covered by the sleeve
- Sleeve or capsule materials
- Contents and temperature of the container.

'IF IN DOUBT AS TO SELECTION OF THE CORRECT SHRINK TUNNEL, PLEASE CONSULT OR

TYPICAL APPLICATIONS





| Specification | |
|----------------------|-----|
| Capacity - bpm | 100 |
| Application | |
| Tamper Evident Band | |
| Capsules | |
| Fully Body Sleeve | |
| Decorative Sleeve | |
| Installed Power—kW | 3 |
| Construction | |
| Painted Steel | STD |
| Stainless Steel Clad | O |
| Stainless Steel | NA |

STD = Standard supply
O = Optional construction
NA = Not Available

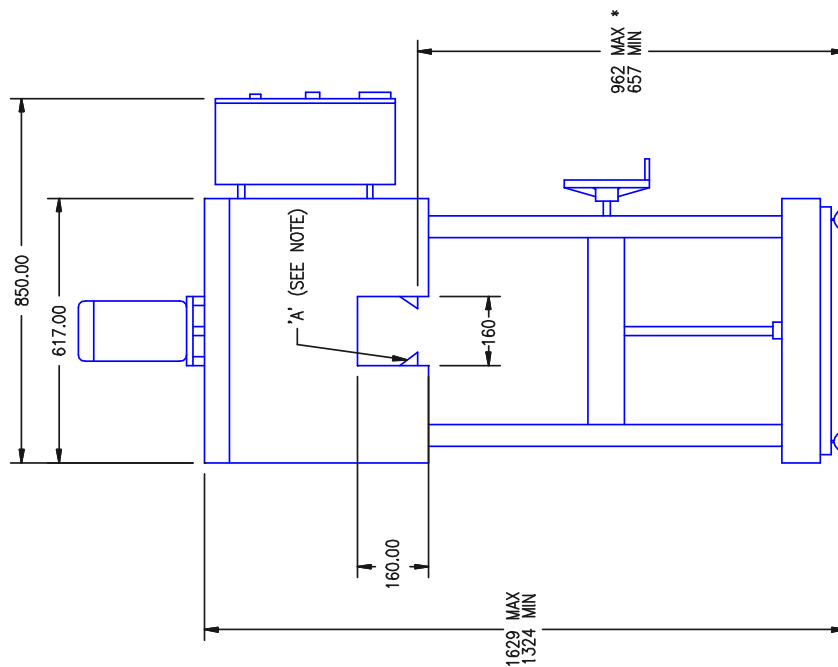
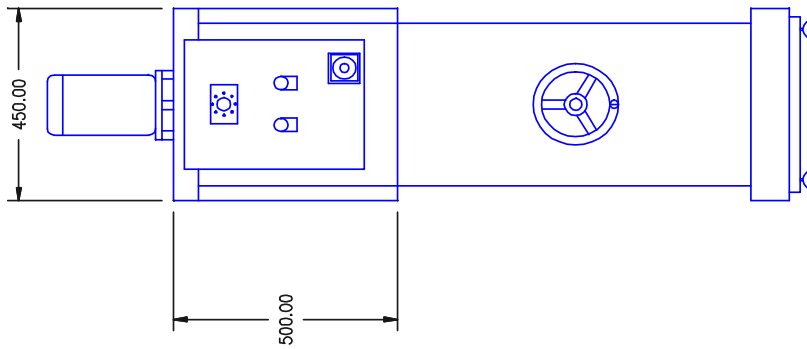
Benefits:

- Smooth wrinkle free finish
- Enhances product image
- Affordable
- Fewer rejects
- Good ROI
- Virtually maintenance free
- Simple to use
- Safe to operate
- Low energy consumption
- Minimal temperature effect on working environment.
- Single phase electrical supply

Features:

- 100 bpm
- Robust heating elements offering long life
- Over heat protection
- Air velocity control
- Full air recirculation for maximum efficiency
- Ease of adjustment and control
- Manual height adjustment—option
- Equally suited to hand or automatic lines
- Fully insulated panels
- Variety of materials of construction
- Optional mounting configurations.
- 'Eye Level' controls.

THIRD ANGLE PROJECTION



* MAX: WORKING HEIGHT CAN BE INCREASED BY 75MM WITH NOZZLE IN POSITION 'A'



| Specification | |
|----------------------|-----|
| Capacity - bpm | 100 |
| Application | |
| Tamper Evident Band | |
| Capsules | |
| Fully Body Sleeve | |
| Decorative Sleeve | |
| Installed Power—kW | 12 |
| Construction | |
| Painted Steel | STD |
| Stainless Steel Clad | O |
| Stainless Steel | O |

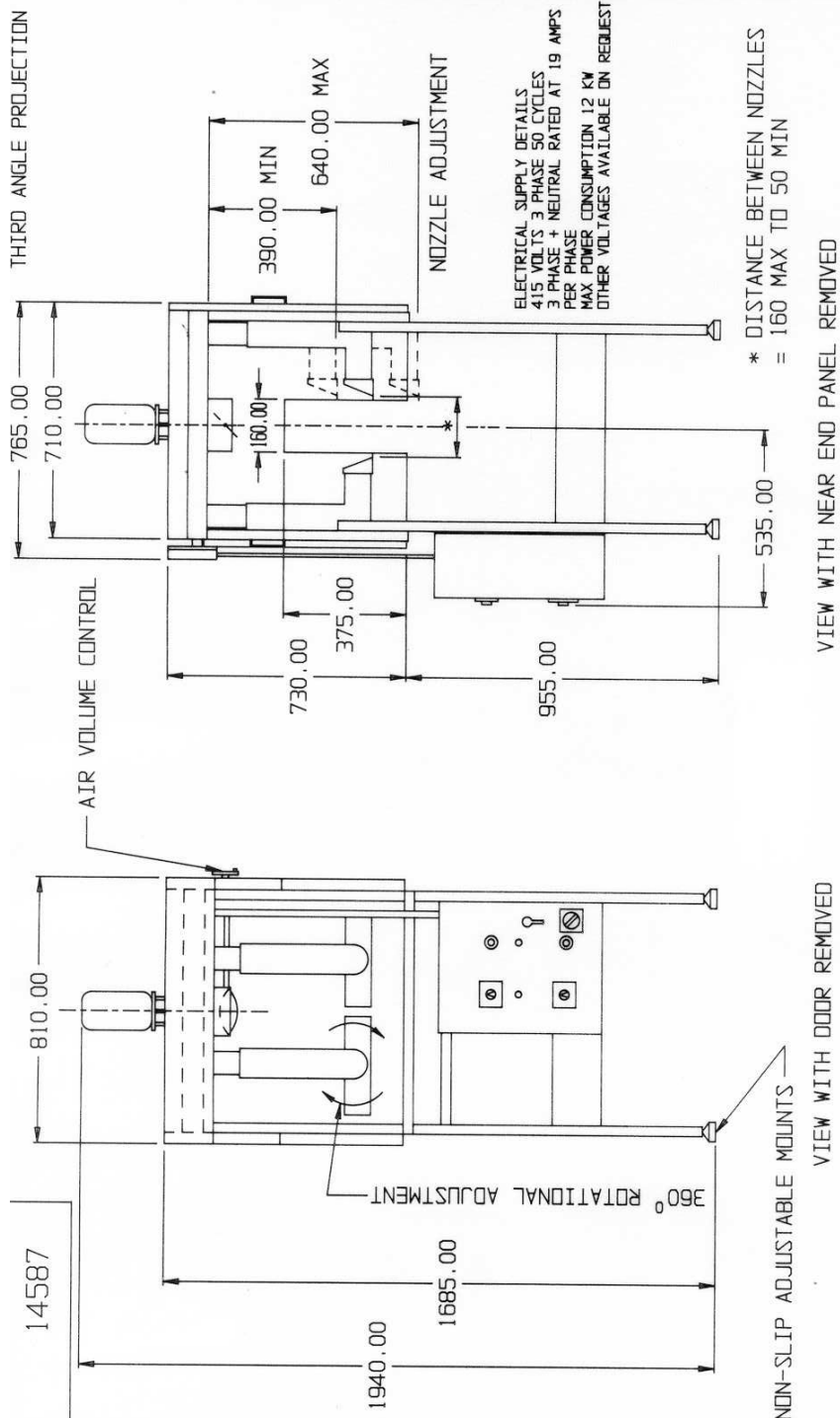
STD = Standard supply
O = Optional construction
NA = Not Available

Benefits:

- Smooth wrinkle free finish
- Horizontal print lines maintained
- Enhances product image
- Affordable
- Fewer rejects
- Good ROI
- Virtually maintenance free
- Simple to use
- Safe to operate
- Low energy consumption
- Minimal temperature effect on working environment.

Features:

- 100 bpm
- Multi air nozzles providing accurate position of heat impingement
- Robust heating elements offering long life
- 2 heat zones
- Individual temperature control
- 3 power settings
- Burst fire module offering precise, constant temperature control
- Over heat protection
- Air velocity control
- Full air recirculation for maximum efficiency
- Ease of adjustment and control
- Fixed operating height
- Equally suited to hand or automatic lines
- Fully insulated panels
- Variety of materials of construction





| Specification | |
|----------------------|-----|
| Capacity - bpm | 200 |
| Application | |
| Tamper Evident Band | |
| Capsules | |
| Fully Body Sleeve | |
| Decorative Sleeve | |
| Installed Power—kW | 18 |
| Construction | |
| Painted Steel | STD |
| Stainless Steel Clad | STD |
| Stainless Steel | NA |

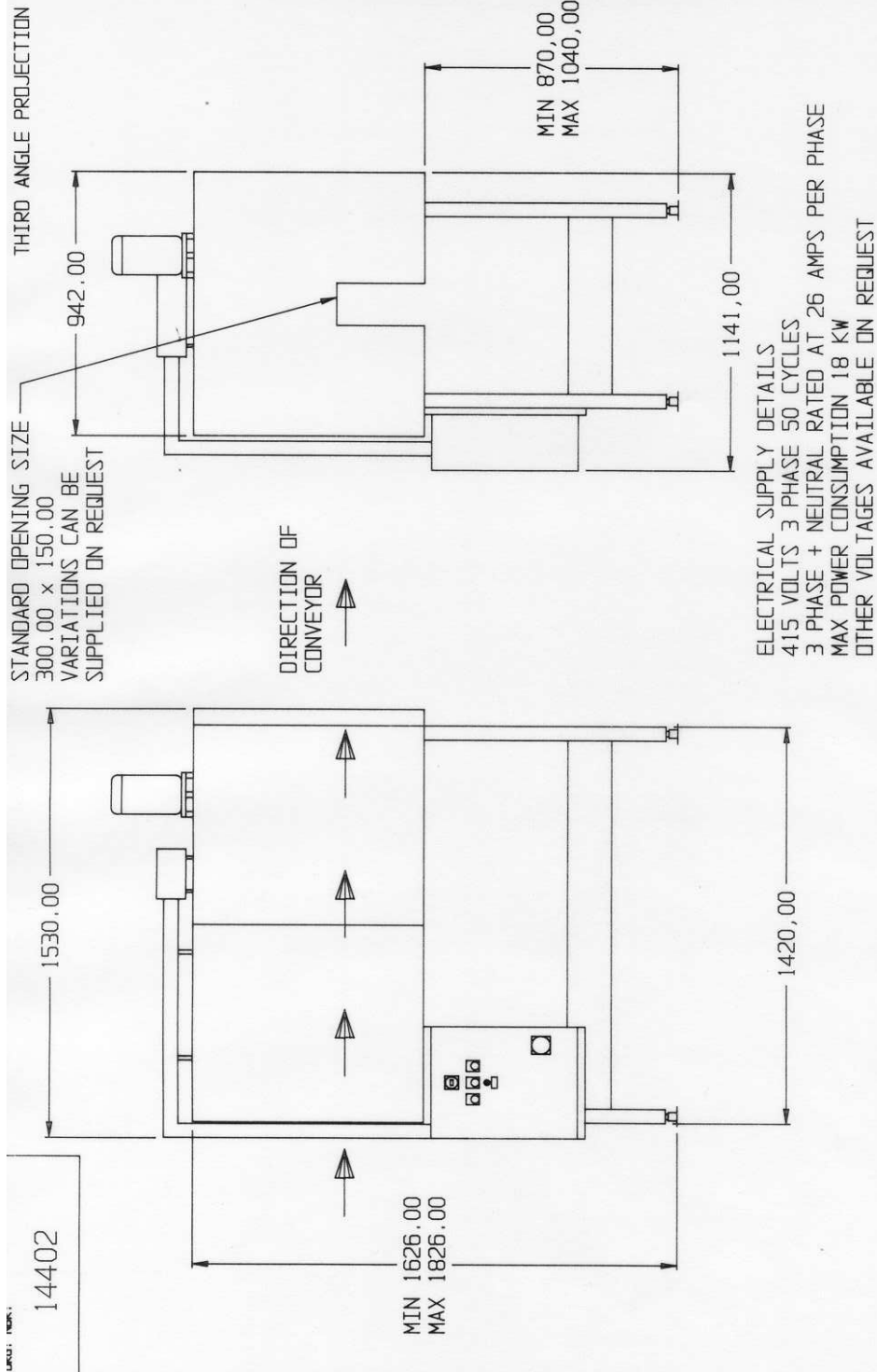
STD = Standard supply
O = Optional construction
NA = Not Available

Benefits:

- Smooth wrinkle free finish
- Horizontal print lines maintained
- Enhances product image
- Affordable
- Fewer rejects
- Good ROI
- Virtually maintenance free
- Simple to use
- Safe to operate
- Low energy consumption
- Minimal temperature effect on working environment.

Features:

- 200 bpm
- 16 air delivery nozzles providing accurate position of heat impingement
- Robust heating elements offering long life
- Burst fire module offering precise, constant temperature control
- Over heat protection
- Air velocity control
- Full air recirculation for maximum efficiency
- Ease of adjustment and control
- Ideal for automatic production lines
- Fully insulated panels
- Fixed operating height
- Variety of materials of construction
- Suitable for a wide variety of container shapes and sizes.





| Specification | |
|----------------------|-----|
| Capacity - bpm | 150 |
| Application | |
| Tamper Evident Band | |
| Capsules | |
| Fully Body Sleeve | |
| Decorative Sleeve | |
| Installed Power—kW | 5 |
| Construction | |
| Painted Steel | O |
| Stainless Steel Clad | O |
| Stainless Steel | STD |

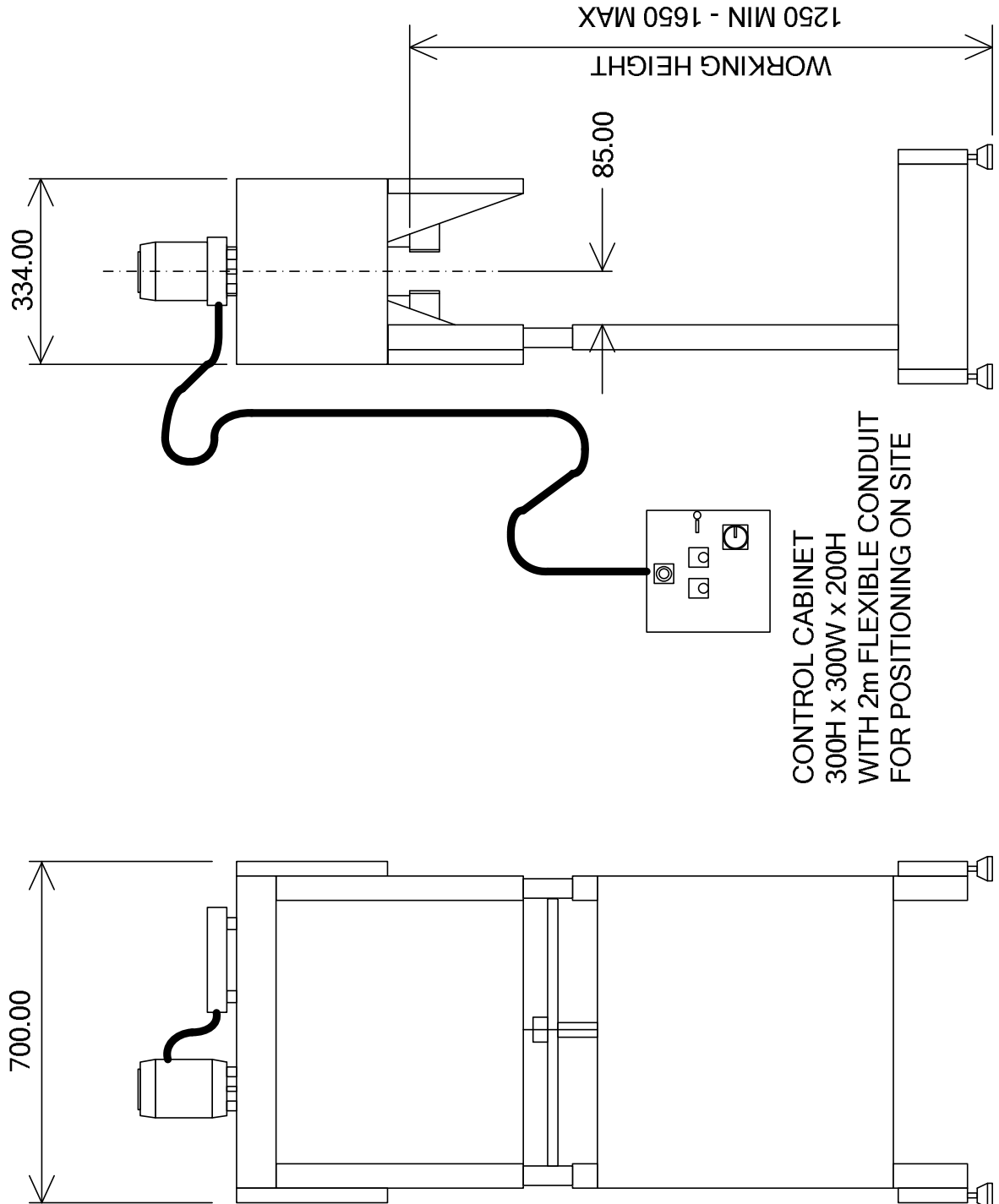
STD = Standard supply
O = Optional construction
NA = Not Available

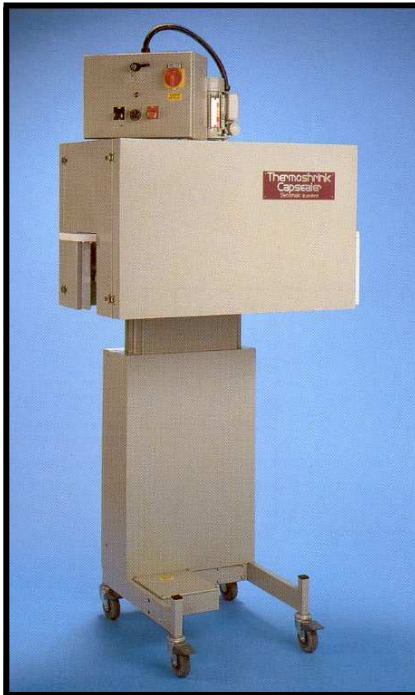
Benefits:

- Capsules always flat on top
- Smooth wrinkle free finish
- Horizontal print lines maintained
- Enhances product image
- Affordable
- Fewer rejects
- Good ROI
- Virtually maintenance free
- Simple to use
- Safe to operate
- Low energy consumption
- Minimal temperature effect on working environment.

Features:

- 150 bpm
- Unique design air nozzles providing accurate position of heat impingement
- Robust heating elements offering long life
- Burst fire module offering precise, constant temperature control
- Over heat protection
- Air velocity control
- Full air recirculation for maximum efficiency
- Ease of adjustment and control
- Equally suited to hand or automatic lines
- Fully insulated panels
- Variety of materials of construction





| Specification | |
|----------------------|-----|
| Capacity - bpm | 300 |
| Application | |
| Tamper Evident Band | |
| Capsules | |
| Fully Body Sleeve | |
| Decorative Sleeve | |
| Installed Power—kW | 9 |
| Construction | |
| Painted Steel | O |
| Stainless Steel Clad | O |
| Stainless Steel | STD |

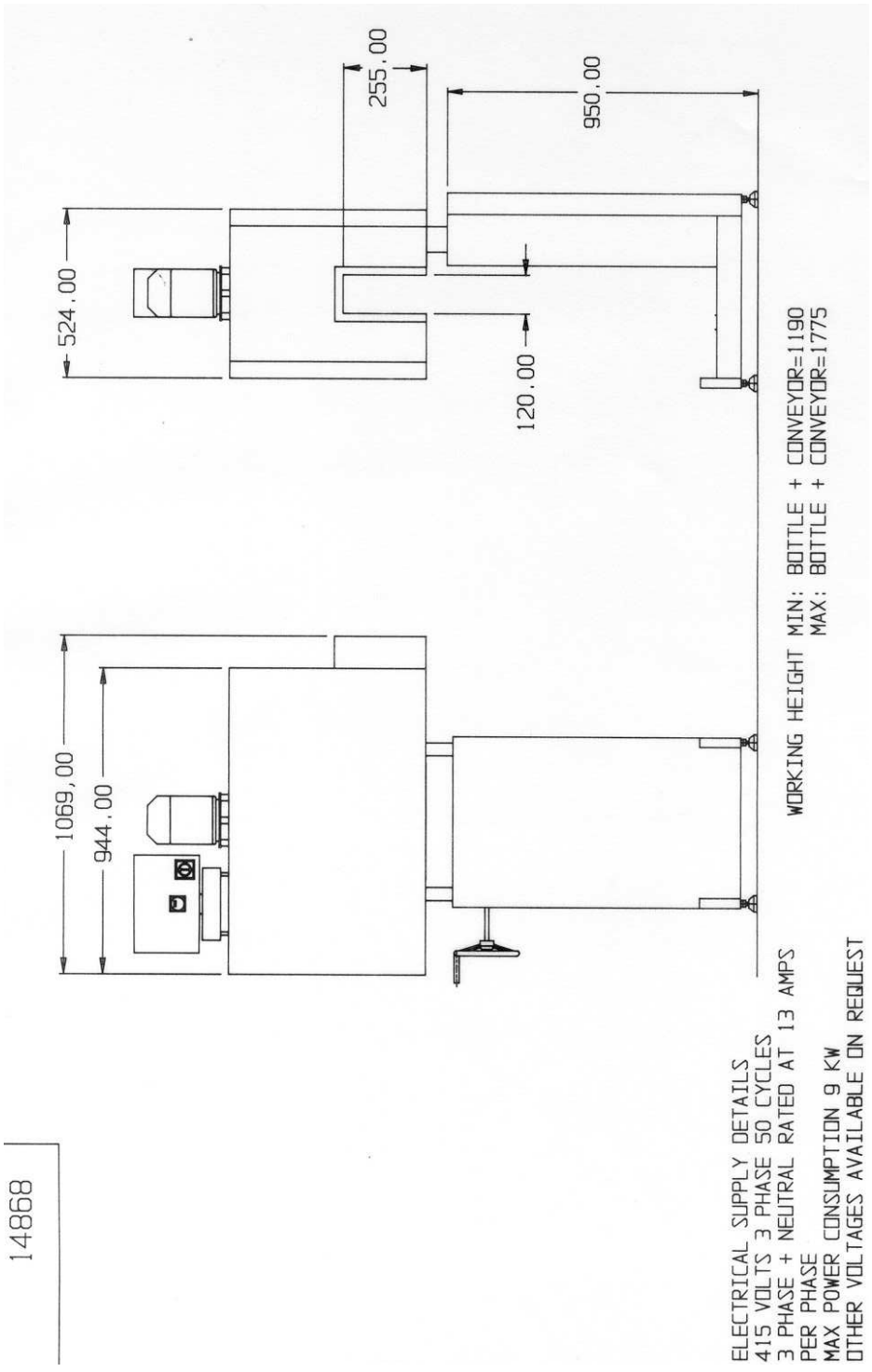
STD = Standard supply
O = Optional construction
NA = Not Available

Benefits:

- Capsules always flat on top
- Smooth wrinkle free finish
- Horizontal print lines maintained
- Enhances product image
- Affordable
- Fewer rejects
- Good ROI
- Virtually maintenance free
- Simple to use
- Safe to operate
- Low energy consumption
- Minimal temperature effect on working environment.

Features:

- 300 bpm
- Unique design air nozzles providing accurate position of heat impingement
- Robust heating elements offering long life
- Burst fire module offering precise, constant temperature control
- Over heat protection
- Air velocity control
- Full air recirculation for maximum efficiency
- Ease of adjustment and control
- Equally suited to hand or automatic lines
- Fully insulated panels
- Variety of materials of construction





| Specification | |
|----------------------|-----|
| Capacity - bpm | 400 |
| Application | |
| Tamper Evident Band | |
| Capsules | |
| Fully Body Sleeve | |
| Decorative Sleeve | |
| Installed Power—kW | 12 |
| Construction | |
| Painted Steel | O |
| Stainless Steel Clad | O |
| Stainless Steel | STD |

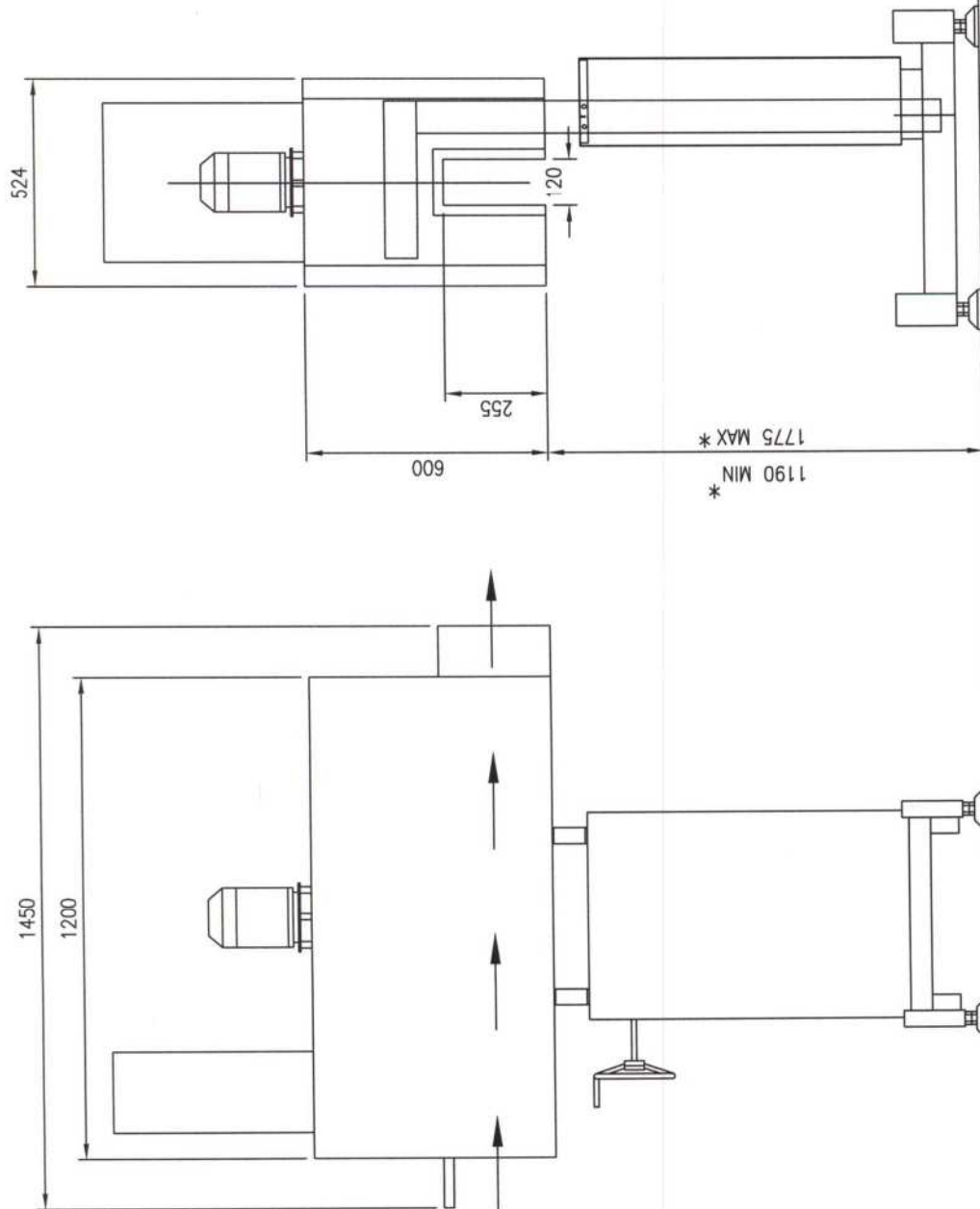
STD = Standard supply
O = Optional construction
NA = Not Available

Benefits:

- Capsules always flat on top
- Smooth wrinkle free finish
- Horizontal print lines maintained
- Enhances product image
- Affordable
- Fewer rejects
- Good ROI
- Virtually maintenance free
- Simple to use
- Safe to operate
- Low energy consumption
- Minimal temperature effect on working environment.

Features:

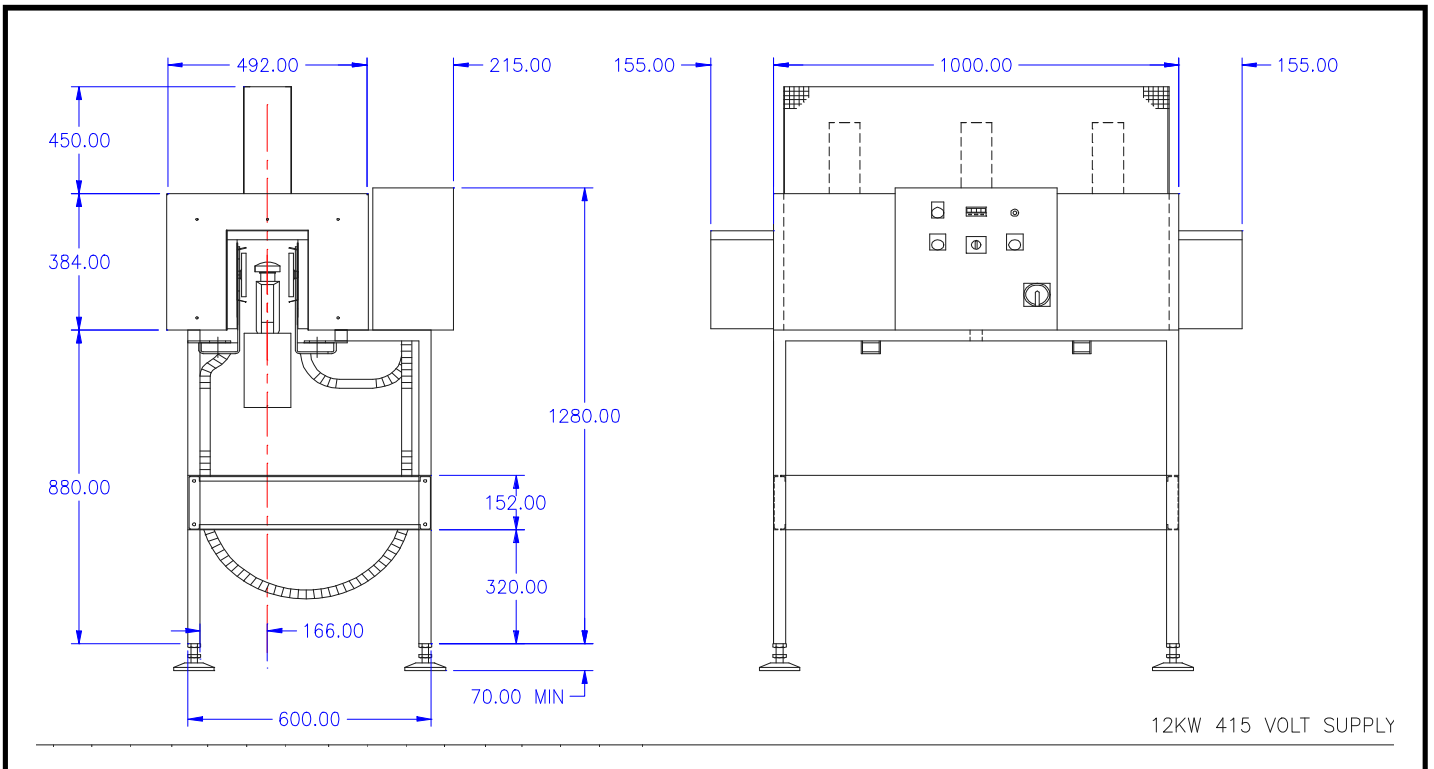
- 400 bpm
- Unique design air nozzles providing accurate position of heat impingement
- Robust heating elements offering long life
- Burst fire module offering precise, constant temperature control
- Over heat protection
- Air velocity control
- Full air recirculation for maximum efficiency
- Ease of adjustment and control
- Equally suited to hand or automatic lines
- Fully insulated panels
- Variety of materials of construction



OTHER EQUIPMENT

Applications;

- Pre warming of containers and jars





Applications;

- Leak Proof poultry packs
- Flow wrapped portion packs
- Ready Meals
- Pizza
- Food and Non Food

Features;

- Low Power Consumption
- Hot Air Recirculation
- Hot Water options
- Full Thermal Control
- SES and BDF film

Secomak Ltd
330 Centennial Park
Elstree
Herts
WD6 3TJ
UK

Tel: +44 (0) 208 732 1300
Fax: +44 (0) 208 732 1301
www.secomak.com
Email: sales@secomak.com